



Dekton®

by Cosentino®

Innovation applied to design

Dekton® has all the technical specifications required in a high resistance surface to transform any interior and exterior design project.



→ Countertop, cladding and flooring made of Dekton® VK02 Avorio kC (serie Pietra Kode).

Advantages



Wide range of colours



High resistance to hydrolysis



Fireproof material



Scratch resistant



Abrasion resistant



Stain resistant



High mechanical strength



Dimensional stability



High resistant to UV rays



Heat resistant



Resistant to freezing and thawing



Easy to clean and low maintenance

Sizes

Dekton offers a wide variety of slab formats and customised cut-to-size, along with thicknesses of 0.4; 0.8; 1.2; 2 and 3 cm. This responds to the functional and creative needs of the designer in any interior and exterior project, however complex it may be.

Large format slab:

→ From 320 x 144 cm. Our standard format ranges from 320 x 144 cm as a nominal minimum size to a maximum size of 326 x 146 cm in colours with Quick Cut technology.

→ 300 x 100 cm. New format in 8 mm for a selection of colours.

Standard pieces ready to install:

→ 260 x 100 cm in 4 mm thickness. Optimma tile format

→ Formats with maximum use starting from a standard slab. Some examples:

- › 142 x 106 cm
- › 142 x 71 cm
- › 159 x 142 cm
- › 71 x 71 cm
- › 142 x 142 cm
- › 142 x 79 cm
- › 159 x 71 cm

→ Customisation of the format according to project needs.



→ Cladding and countertop made of Dekton® Daze kC (serie Onirika).

Applications



Kitchen
countertops



Bathroom
countertops



Outdoor
countertops



Outdoor terrace
wall coverings



Exterior walls
and facades



Bathroom
walls



Indoor
floors



Bathroom and pool
floor covering



Outdoor terrace
floor covering



Stairs

Textures

Dekton® is available in different textures so that the only limit is the imagination of the architect or designer: from the ultra-gloss finish, to options in matte or with a velvety texture.

✳ → X-Gloss

☞ → Textured

◻ → Smooth matte

☞ ☞ → Textured matte

☞ → Velvet

☞ ☞ → Textured velvet

Warranty

Dekton presents its 25 year warranty; a guarantee to give more confidence to the consumer with the most innovative material on the market.

25

Year
Warranty

DEKTON®



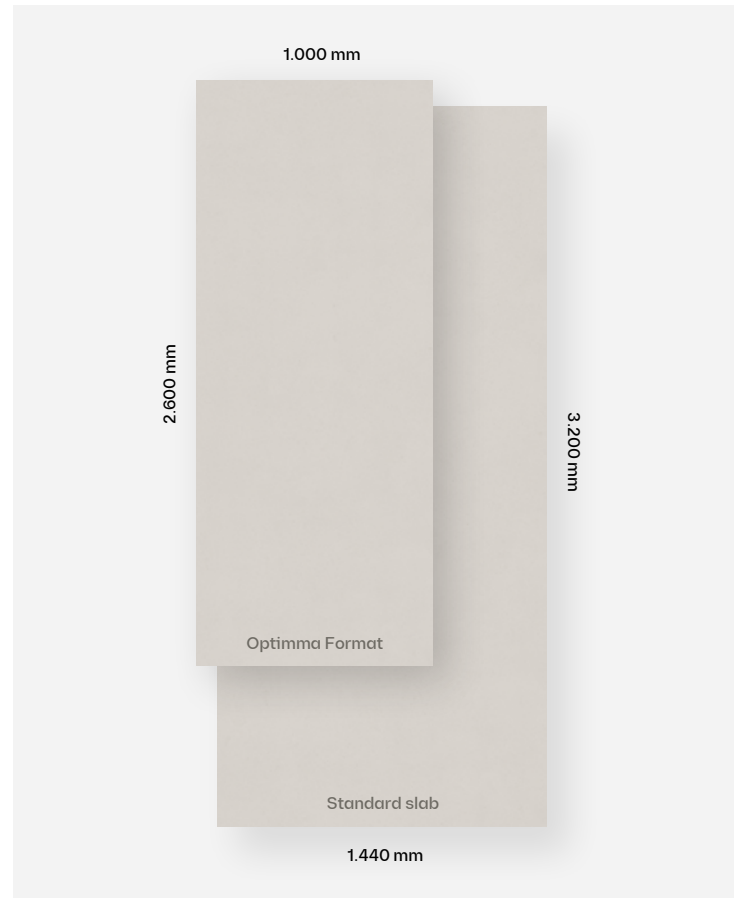
Optimma

Optimised Dekton® format

The final solution for interior cladding

We are proud to present our first format in the Optimma family made specifically for cladding:

Optimma format 2.600 x 1.000 x 4 mm.



Cost-effective

Thanks to the fact that the measurements have been optimised to the most common covering standards, we manage to avoid waste and this reduces the price of the piece.



Design with purpose

The Dekton® slab has been optimised with common interior cladding applications in mind. It offers improved price, design, installation and handling.



Easy to install

The product is smaller and lighter, allowing for easy transportation and handling. The cut can be done with basic tools. Edges are already beveled and the slab is always meshed on the back.



Match design

The piece is designed to cover big surfaces in a continual and natural way. It is as easy as rotating and changing its position during installation.

Standard Optimma portfolio

Group 0-1	Group 2	Group 3	Group 4	Group 5
Aeris <u>k</u> C Kreta	TK06 Marmorio <u>k</u> C ⁽¹⁾ NEW Albarium 22 <u>k</u> C Argentium <u>k</u> C Kelya Nacre <u>k</u> C Zenith <u>k</u> C	Marina <u>k</u> C Lineal Match NEW Reverie <u>k</u> C NEW Morpheus <u>k</u> C Neural <u>k</u> C Somnia Laurent Rem <u>k</u> C	Awake <u>k</u> C Morpheus <u>k</u> C Bookmatch Lucid <u>k</u> C Somnia Lineal Match Bergen <u>k</u> C	Lucid <u>k</u> C Bookmatch

→ ⁽¹⁾Own tonality: The 4 mm tone differs from the tone of standart samples.

Dekton® Slim Protek

Minimum 4 mm thickness $\frac{1}{8}$ "

Dekton® Slim Protek is the ultra-thin 4 mm thickness in large format that offers unlimited design options and incredible ease of installation and transport. Ideal for covering walls of bathrooms and kitchens, as well as all kinds of furniture. If the product needn't mesh (Dekton Slim) due to technical necessity, please consult conditions with Cosentino Group.

01 → Large format and minimal joints

Its large format of up to 326x146 cm covers large surfaces, avoiding as much as possible the number of joints and therefore minimising cleaning.

02 → Easy installation

Having such a lightweight format, but with so many possibilities, simplifies everything. Its thin thickness allows for quick cutting and on-site adjustments with ceramic tile tools.

03 → Design with no limits

Dekton® Slim Protek is very easy to make and can be cut to size. It adapts to all spaces.

04 → Maximum resistance to humidity

Dekton® Slim Protek is the ultra moisture and stain resistant covering ideal for bathrooms. A high-performance product that requires no more maintenance than a simple damp cloth.

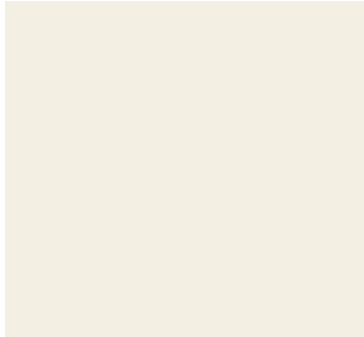
Portfolio Dekton Slim Protek

Group 0	Group 1	Group 2		Group 3	Group 4	Group 5
Aeris <u>k</u> C	Kreta	VK04 Grafite NEW	Kelya	Aura 22 <u>k</u> C	Arga <u>k</u> C	Awake <u>k</u> C Bookmatch
Danae <u>k</u> C	Sasea <u>k</u> C	TK06 Marmorio <u>k</u> C ⁽¹⁾	Laos	Daze <u>k</u> C	Awake <u>k</u> C	Lucid <u>k</u> C Bookmatch
Eter	Sirius	TK05 Sabbia <u>k</u> C	Marina <u>k</u> C	Laurent	Bergen <u>k</u> C	Trance <u>k</u> C Lineal Match
Mooné <u>k</u> C		VK01 Nebbia <u>k</u> C ⁽¹⁾	Nacre <u>k</u> C	Morpheus <u>k</u> C	Helena 22 <u>k</u> C	
		GK07 Ceppo <u>k</u> C	Trilium	Neural <u>k</u> C	Limbo <u>k</u> C	
		VK 03 Grigio <u>k</u> C	Umber	Rem <u>k</u> C	Lucid <u>k</u> C	
		Albarium 22 <u>k</u> C		Somnia	Morpheus <u>k</u> C Book Match	
		Argentium <u>k</u> C			Somnia Linealmatch	
					Trance <u>k</u> C	
					Vigil <u>k</u> C	

→ ⁽¹⁾ Own tonality: The 4 mm tone differs slightly from the tone of standart samples.



Dekton® Slim Protek portfolio



Mooné kC □



Aura 22 kC □



Helena 22 kC *



Rem kC ≡



Vigil kC *
Daze kC



Limbo kC *
Neural kC ≡



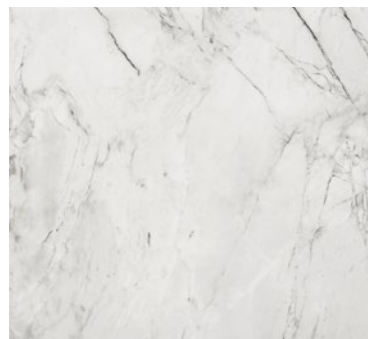
Awake kC *
Awake kC Bookmatch
Reverie kC



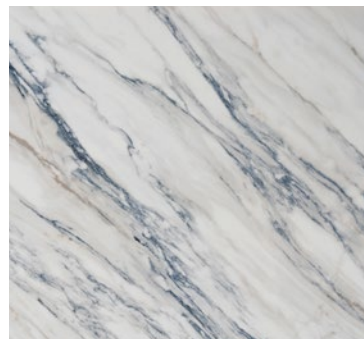
Lucid kC *
Lucid kC Bookmatch *
Morpheus kC
Morpheus kC Bookmatch



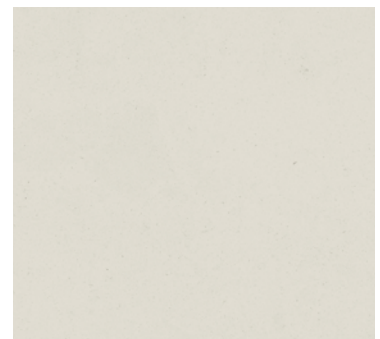
Marina kC



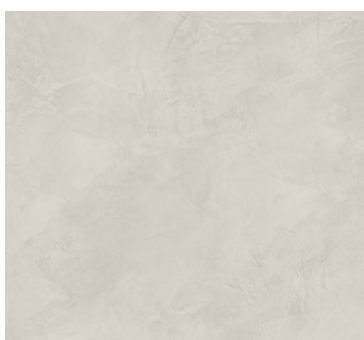
Bergen kC *



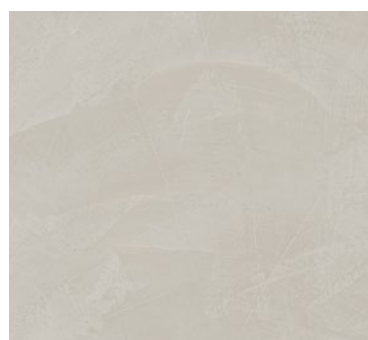
Trance kC *
Trance kC Lineal Match *



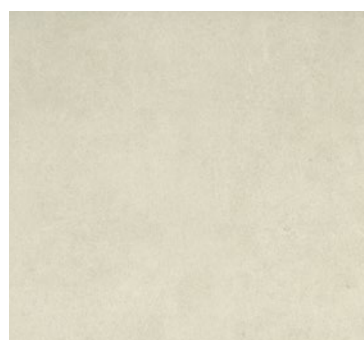
Aeris kC □



Albarium 22 kC □



Argentium kC □



Sasea kC □



Danae kC □

Dekton® Slim Protek portfolio



Nacre kC 



Arga kC 



VK01 Nebbia kC 





Umber 



TK06 Marmorio kC  



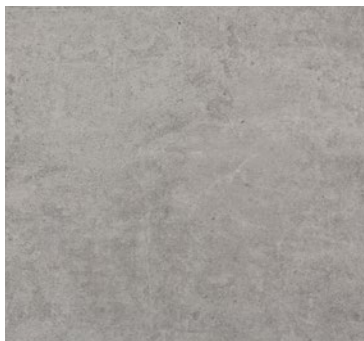
TK05 Sabbia kC  



GK07 Ceppo kC 



VK03 Grigio kC 




Kreta 



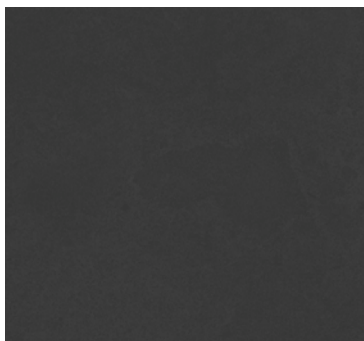
VK04 Grafite 



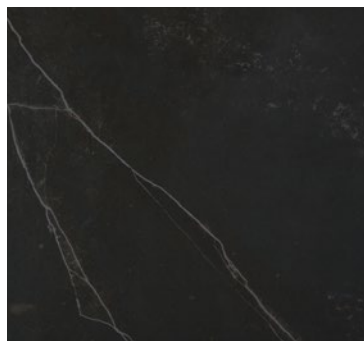
Trilium 



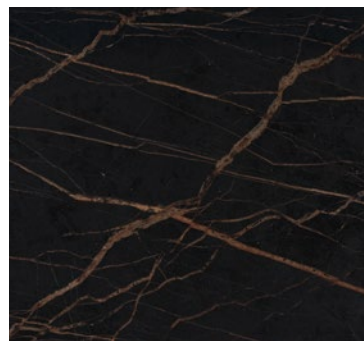
Laos 




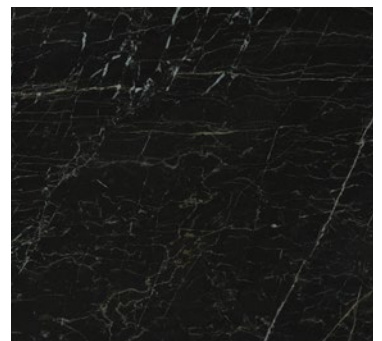
Eter 




Kelya 



Laurent  



Somnia 
Somnia Linealmatch 

Dekton® Slim Protek portfolio



Sirius 

Key

-
-  Polished finish.

 -  Smooth matte finish

 -  Textured finish.

 -  Textured matte finish.

 -  Textured velvet finish.

 -  Velvet finish.

 -  Made with Quick Cut technology.

Design Match

Book Match

From some of our designs, we have created unique, symmetrical and interchangeable references that allow compositions and designs to be made where the veins have continuity between different pieces.

There is a classification system of numbers and letters to select the patterns that best suit your needs according to available colour and thickness.

Material upon request, check availability.

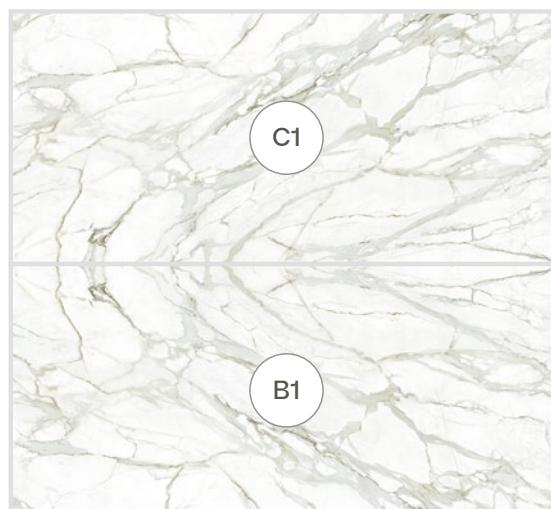
Dekton Awake kC

→ Available in 4, 8 and 12 mm thickness.



Dekton Lucid kC and Morpheus kC

→ Available in 4, 8 and 12 mm thickness
and in Optimma tile format.



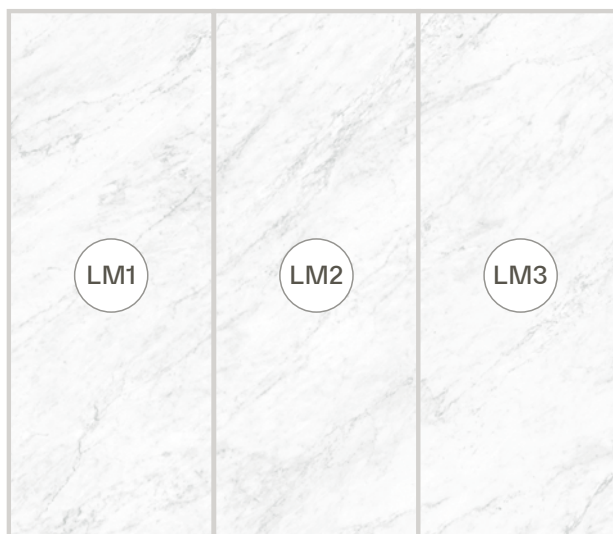
Lineal Match

We present a new concept that includes references of the same colour to create a fluid and constant environment. Focused on large area flooring and vertical cladding applications.

Dekton Marina kC

→ Available in Optimma tile format.

Marina kC and Somnia express their sinuosity through three different graphic references, designed to be placed next to each other from left to right.



Dekton Somnia

→ Available in 4, 8 and 12 mm thickness and in Optimma tile format.



Dekton Trance kC

→ Available in 4, 8 and 12 mm thickness.

Trance kC conforms a new design conceived to position the slabs vertically. It consists of the same table that rotates 180° in each of its iterations, thus creating a continuous and harmonious design.



Dekton® Designs

We have classified our range of colors into three different groups of designs, taking into account the desired effect on large surfaces and details such as the directionality of the design or its variants.

This classification is indicative. We recommend to contact our Product department to explore all the options and achieve the exact result you envision for your project.

Infinite Design

Uniform colours or designs with a consistent or almost consistent composition and structure that, when used for cladding such as floors, walls or façades, allow for random placement of slabs and cuts, providing a beautifully consistent look. Recommended for cladding large surfaces.



→ Cladding and flooring: Dekton® Argentium κC (Kraftizen series).

Singular Design

Designs with chromatic ranges of greater complexity and a very strong directionality which offer patterns with a lot of character that create a variety of effects in smaller cuts or adjacent layouts. We recommend consulting our technical team for use on large surfaces.



→ Cladding and countertop: Dekton® Somnia (OniriKa series).

Smooth Design

Designs with a marked directionality in their graphic structure that must be taken into account when cutting and placing adjacent slabs. It is a very versatile type of pattern, but it requires the appropriate placement and cutting of slabs. Recommended for large surfaces.



→ Cladding: Dekton® TK06 Marmorio κC (Pietra Kode series).

Design and installation of flooring and cladding

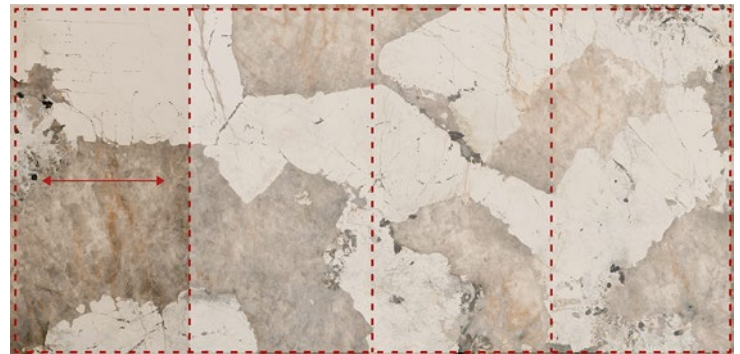
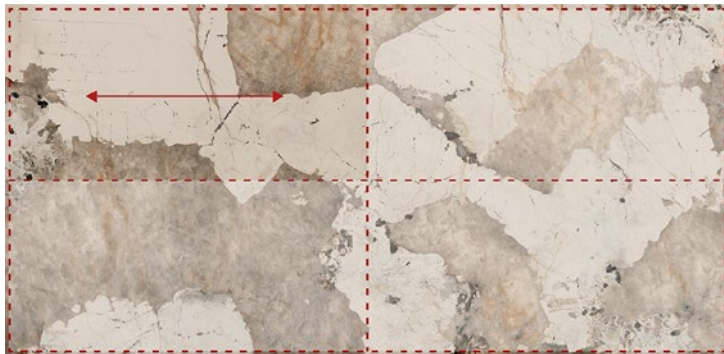
Due to the fact that Dekton® designs have been conceived for large format (full slab), it is possible that in smaller formats used for flooring, color jumps, certain contrasts or changes in directionality between pieces can be observed. We recommend taking this aspect into account from the design phase.

In the 142 x 106 cm and 142 x 79 cm formats, the orientation of the graphic cannot be changed by applying the price of the pricelist. See possible quote options.

Differences in the directionality of the vein according to the cut pattern and the desired format:

Option A: Vein parallel to the piece.

Option B: Grain perpendicular to the piece.



→ Singular Design: Dekton® Khalo kC.



→ Singular Design: Dekton® Trance kC.

The colours susceptible to changes in the directionality of the vein are those belonging to the Singular and Smooth designs.

Singular Design			Smooth Design	Infinite Design	
Arga <u>kC</u>	Kelya	Neural <u>kC</u>	GK07 Ceppo <u>kC</u>	Kuro C.SOON	VK03 Grigio <u>kC</u>
Aura 22 <u>kC</u>	Khalo <u>kC</u>	Rem <u>kC</u>	Danae <u>kC</u>	Aeris <u>kC</u>	Mooné <u>kC</u>
Awake <u>kC</u>	Laos	Reverie <u>kC</u>	Kira	Albarium 22 <u>kC</u>	Nacre <u>kC</u>
Bergen <u>kC</u>	Laurent	Somnia	Kreta	Argentium <u>kC</u>	VK01 Nebbia <u>kC</u>
Daze <u>kC</u>	Limbo <u>kC</u>	Trance <u>kC</u>	TK06 Marmorio <u>kC</u>	Domoos	Sasea <u>kC</u>
Entzo 22 <u>kC</u>	Lucid <u>kC</u>	Trilium	TK05 Sabbia <u>kC</u>	Dunna <u>kC</u>	Sirius
Helena 22 <u>kC</u>	Marina <u>kC</u>	Vigil <u>kC</u>		Eter	Umber
Kairos 22 <u>kC</u>	Morpheus <u>kC</u>			VK04 Grafite	Uyuni <u>kC</u>

Introducing **KURO**: The Essence of Infinite Blackness.

Step into a world where darkness unveils its true beauty. **KURO**, inspired by the enigmatic Japanese word for black, transcends mere colors to evoke a sense of depth and mystery like no other.

KURO stands as a symbol of elegance and sophistication. A deep black surface, reminiscent of the darkest night sky. Its matt texture invites you to explore the depths of your imagination, to dive into the unknown.

Beyond its aesthetic appeal, **KURO** embodies a deep sense of tranquility, balance and simplicity.

- Finish: Smooth matt.
- Thicknesses: 8, 12 and 20 mm.
- Price group 3.

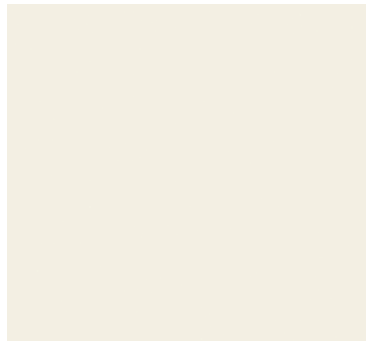
COMING SOON.
Please, check availability.

DEKTON
kuro

Designed by Cosentino®



Dekton® Collection



Mooné kC  



Aura 22 kC  



Kairos 22 kC 



Awake kC  
Reverie kC  





Lucid kC  
Morpheus kC  



Vigil kC  
Daze kC  



Limbo kC 
Neural kC 



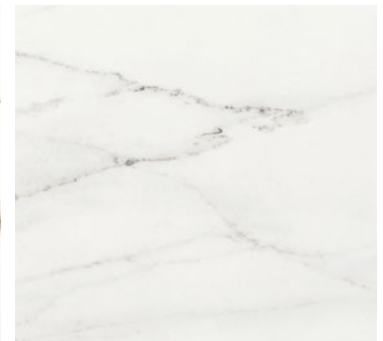
Marina kC 



Trance kC  



Entzo 22 kC 



Rem kC  



Helena 22 kC  



Bergen kC  



Aeris kC   



Albarium 22 kC   

Dekton® Collection



Argentium kC   



Dunna kC 



Sasea kC   



Danae kC   







Nacre kC    



Arga kC  






TK06 Marmorio kC    




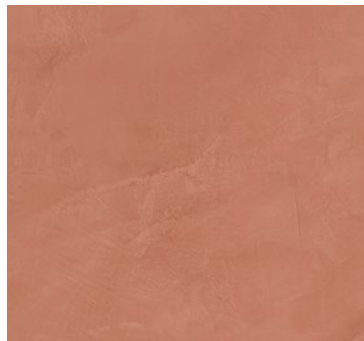
TK05 Sabbia kC    



VK01 Nebbia kC   






Khalo kC 






Umber  




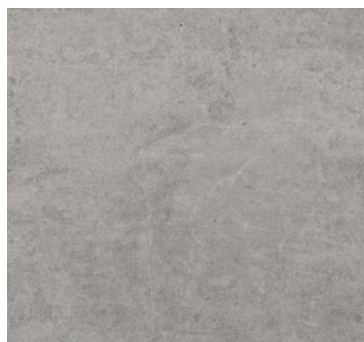
VK03 Grigio kC   



GK07 Ceppo kC   




VK04 Grafite   



Kreta   

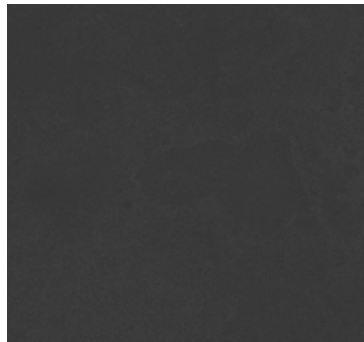


Trilium  

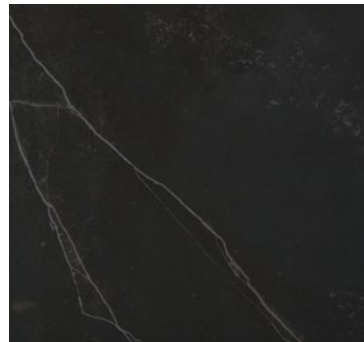
Dekton® Collection



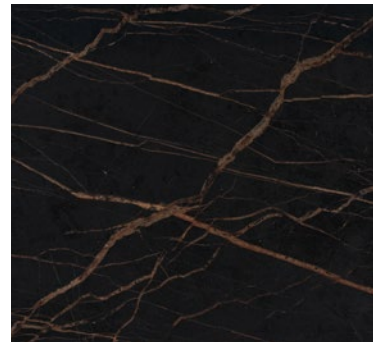
Laos  



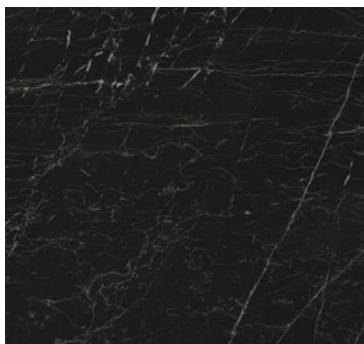
Eter  



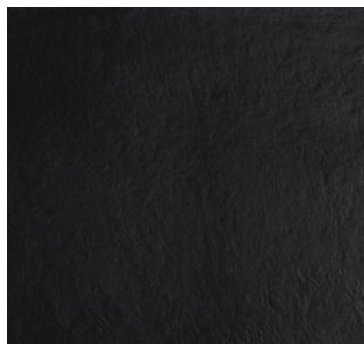
Kelya  



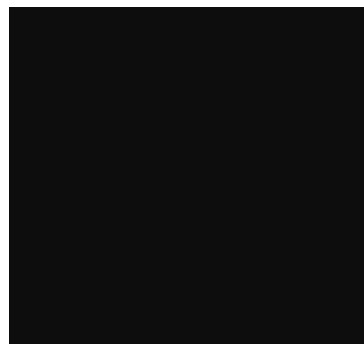
Laurent   




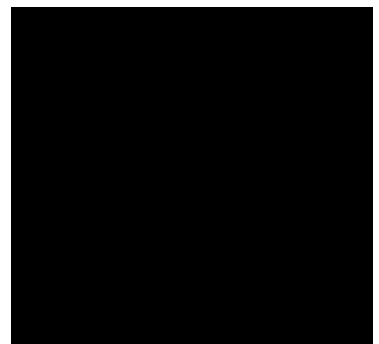
Somnia  



Sirius   












Domoos 



Kuro 

Key

	Polished finish.		Available with Dekton® Grip+ technology.
	Smooth matte finish		Available in Dekton Slim Protek: 4 mm. thickness.
	Textured finish.		Made with Quick Cut technology.
	Velvet finish.		
	Textured matte finish.		
	Textured velvet finish.		



→ Countertop made of the new Dekton® Kuro.

Dekton® Collection - Formats and finishes available

Group	Colour	Finish	Formats and thickness available (cm)					
			Anti-slip		From 320 x 144			300 x 100 ⁽¹⁾
			Grip	Grip+	0,4	0,8 1,2 2,0	3,0	0.8
0	Aeris <u>k</u> C	☐	•	•	•	•		
	Danae <u>k</u> C	☐	•	•	•	•	•	
	Eter	☐			•	•		
	Mooné <u>k</u> C	☐			•	•		
1	Kairos 22 <u>k</u> C	☐				•		
	Kreta	☐		•	•	•		•
	Sasea <u>k</u> C	☐	•	•	•	•		
	Sirius	☐ ☸			•	•	•	•
2	Albarium 22 <u>k</u> C	☐	•	•	•	•		
	Argentium <u>k</u> C	☐		•	•	•		
	GK07 Ceppo <u>k</u> C	☐		•	•	•		
	Domoos	☐				•	•	
	VK04 Grafite	☐		•	•	•		
	VK03 Grigio <u>k</u> C	☐		•	•	•		
	Kelya	☐			•	•		•
	Laos	☐			•	•		•
	Marina <u>k</u> C	☐ ☸			•	•		
	TK06 Marmorio <u>k</u> C	☐ ☸		•	•	•		
	Nacre <u>k</u> C	☐ ☸ ☸	•	•	•	•		
	VK01 Nebbia <u>k</u> C	☐	•	•	•	•		
	TK05 Sabbia <u>k</u> C	☐ ☸		•	•	•		
	Trilium	☐			•	•	•	•
Umber	☐			•	•			
3	Kuro C.SOON	☐				•		
	Aura 22 <u>k</u> C	☐			•	•		
	Daze <u>k</u> C	☐ ☸			•	•		
	Entzo 22 <u>k</u> C	☐				•		
	Laurent	☐ ☸			•	•		•
	Morpheus <u>k</u> C	☐ ☸			•	•		
	Neural <u>k</u> C	☐ ☸ ☸			•	•		
	Rem <u>k</u> C	☐ ☸ ☸			•	•		•
	Reverie <u>k</u> C	☐ ☸			•	•		
	Somnia	☐			•	•		
	Uyuni <u>k</u> C	☐				•		
4	Morpheus <u>k</u> C Bookmatch	☐ ☸			•	• ⁽²⁾		
	Somnia Linealmatch	☐			•	• ⁽²⁾		

Dekton® XGloss Collection - Formats and finishes available

Group	Colour	Finish	Formats and thickness available (cm)					
			Anti-slip		From 320 x 144			300 x 100 ⁽¹⁾
			Grip	Grip+	0,4	0,8 1,2 2,0	3,0	0.8
0	Dunna <u>k</u> C	*				•		
	Arga <u>k</u> C	*			•	•		
4	Awake <u>k</u> C	*			•	•		
	Bergen <u>k</u> C	*			•	•		
	Helena 22 <u>k</u> C	*			•	•		
	Khalo <u>k</u> C	*				•		
	Limbo <u>k</u> C	*			•	•		
	Lucid <u>k</u> C	*			•	•		
	Trance <u>k</u> C	*			•	•		
	Vigil <u>k</u> C	*			•	•		
	Awake <u>k</u> C Bookmatch	*			•	• ⁽²⁾		
	Lucid <u>k</u> C Bookmatch	*			•	• ⁽²⁾		
Trance <u>k</u> C Designmatch	*			•	• ⁽²⁾			

→ ⁽¹⁾ Format available on request. Check availability with your nearest Center.

→ ⁽²⁾ Colors not available in 2,0 cm thickness.

Key

* Polished finish.	☞ Textured finish.	<u>k</u> C Made with Quick Cut technology.
☐ Smooth matte finish.	☐☞ Textured matte finish.	C.SOON Coming soon.
☞ Velvet finish.	☞☞ Textured velvet finish.	