



# Silestone®

by Cosentino®

The ultimate mineral  
HybriQ surface

Silestone® is a hybrid surface of minerals and recycled materials to adorn interior spaces with colours and textures.

## Advantages



Stain resistant



Impact resistant



Acid and scratch resistant



Wide colour range

The advantages of Silestone® are numerous; it requires low maintenance, has a high resistance to stains and scratches and a very low absorption index. This, together with its minimal joints, makes Silestone® the ideal solution for work surfaces.

Silestone® is manufactured in more than 70 colours, three textures and various formats, making it highly versatile. The colour range goes from neutral tones and marbled structures, inspired by natural stones, to vibrant hues and bold structures, which goes beyond the natural world.



→ Kitchen countertop and cladding: Silestone® Lime Delight (Urban Crush Collection). The Silestone® Urban Crush series designs have been registered by Cosentino Group.

## Applications

Silestone® features extreme durability in the kitchen, bathroom and other indoor spaces exposed to constant activity and use.

## Finishes

With the aim of being adapted to all styles, Silestone® offers three different finishes - Polished, Suede and Volcano. Adding texture across kitchen countertops, flooring and cladding sets them apart and creates huge possibilities for different results.

✱ → Polished

☉ → Suede

☼ → Volcano



→ Kitchen countertop and cladding: Silestone® Romantic Ash (Le Chic Collection)  
The Silestone® Le Chic series designs have been registered by Cosentino Group.

## Sizes

Silestone® is available in Standard and Jumbo \* size slabs, in addition to the standard formats recommended for flooring listed below:

### Large format:

Jumbo slabs → Up to 325 x 159 cm

Standard slabs → Up to 306 x 140 cm

### Tiles:

→ 30 x 30 cm → 60 x 30 cm

→ 40 x 40 cm → 60 x 40 cm

→ 60 x 60 cm → Cut to size

Silestone® is commercialised in 1.2, 2 and 3 cm thicknesses. In addition, different pieces can be combined to simulate thicker edges.

### \*Jumbo slabs

This size allows the creation of large surfaces with minimum joints. It allows versatility in design and greater hygiene. In this way the use of the slab is optimised and waste is reduced.

## Warranty

The properties of Silestone® are the result of constant years of innovation that guarantee maximum hygiene and safety.

**25 year**  
warranty

silestone

**HYBRIQ<sup>+</sup>**  
TECHNOLOGY

# The Ultimate mineral HybriQ<sup>®</sup> surface

Introducing Silestone<sup>®</sup> with the new HybriQ+ technology<sup>®</sup>

HybriQ<sup>®</sup> is a patented technology owned by Cosentino for the manufacture of Silestone<sup>®</sup>.

An innovative generation of advanced surfaces composed of a hybrid formulation: a new high-performance blend of Premium minerals, quartz and recycled materials produced through a sustainable manufacturing process, fully powered by recycled water and renewable energy. The result is a more beautiful and sustainable product that maintains Silestone's guaranteed quality.



→ DNV accreditation: This prestigious external international laboratory certifies that all the statements we make about the sustainability and performance of Silestone with HybriQ and HybriQ+ are true and have been verified.



99% recycled water



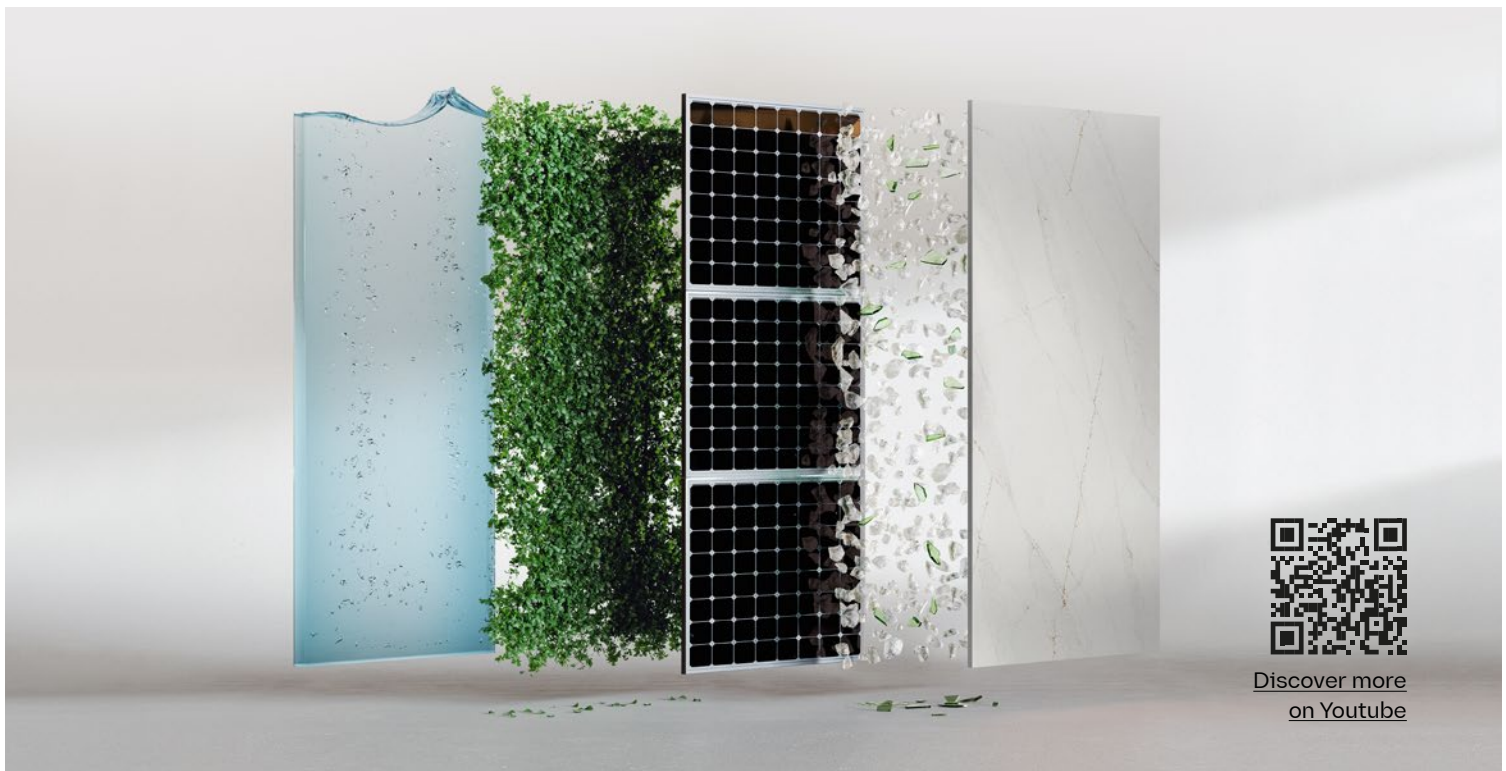
100% renewable electric energy



0% water spill



Minimum 20% of recycled glass



Discover more  
on Youtube



→ Kitchen countertop and cladding made of Silestone® Victorian Silver (Le Chic Collection).  
The Silestone® Le Chic series designs have been registered by Cosentino Group.

### More innovation

Cosentino®'s commitment to offering the most innovative and sustainable surfaces leads Silestone® to exceptional performance and amazing depth of colour. Silestone® is the meeting between innovation and sustainability.

### More design

The new mineral composition makes greater colour depth possible, textures and tones of Silestone® to create unique and customised interior spaces.

### Same benefits

Silestone® with HybriQ+ maintains all the characteristics of quality, durability and warranty that have made Silestone® the market reference in its category.

### More sustainable

HybriQ+ uses a minimum of 20% recycled materials, 99% recycled water and 100% renewable energy.

# Silestone® Collection - New launches

## Urban Crush Series



Lime Delight   Q40



Concrete Pulse   Q40




Brass Relish   Q40



Cinder Craze   Q40

## Le Chic Series



Versailles Ivory  \* Q40



Eclectic Pearl  \*  Q40



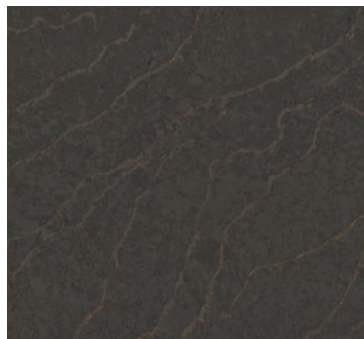
Victorian Silver  \* Q40



Parisien Bleu  \* Q10



Romantic Ash  \*  Q40 

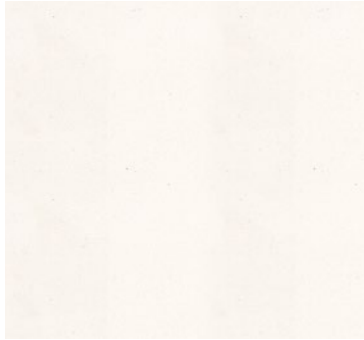


Bohemian Flame  \*  Q10



→ Kitchen countertop and cladding made of Silestone® Concrete Pulse (Urban Crush Collection).  
The Silestone® Urban Crush series designs have been registered by Cosentino Group.

# Silestone® Collection



Blanco Zeus (N) (S) \* (R) Q40



Miami Vena (N) (S) \* (R) Q40



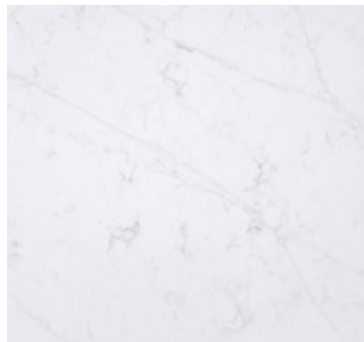
Nolita 23 (S) (R) Q10



Miami White 17 (N) (S) \* (R) Q40



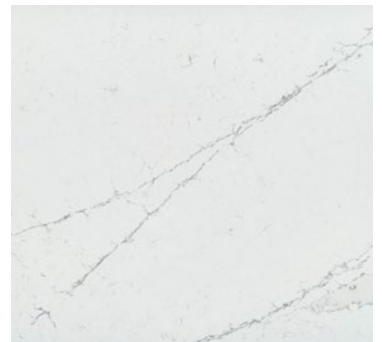
Et. Calacatta Gold (N) (S) \* (R) Q40



Et. Statuario (S) \* (R) Q40



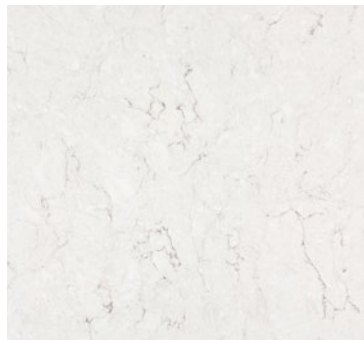
Ethereal Glow (S) \* (R) Q40



Ethereal Noctis (S) \* (R) Q40



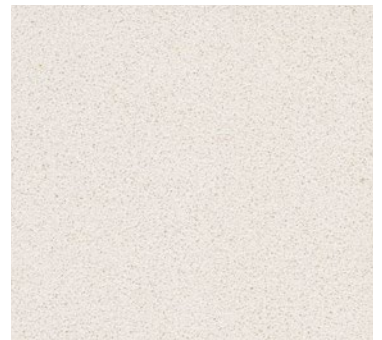
Blanco Maple 14 (N) (S) \* (R) Q40



Snowy Ibiza (N) (S) \* (R) Q40



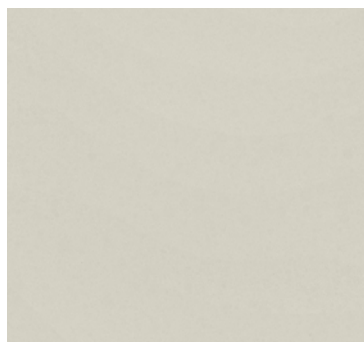
White Arabesque (N) (S) \* (R) Q40



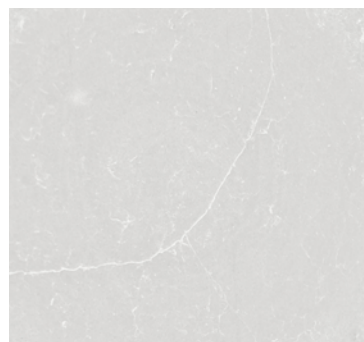
White Storm 14 (N) (S) \* (R) Q40



Yukon (N) \* (R) Q40



Faro White (N) (R) Q10



Desert Silver (N) (S) \* (R) Q40

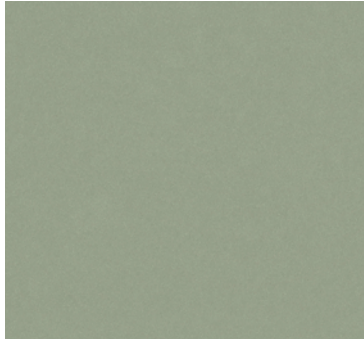


Poblenu (S) (R) Q10

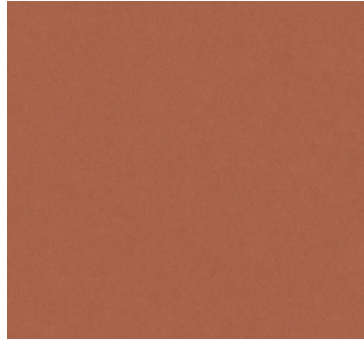
# Silestone® Collection



Cincel Grey (N) (S) (Q10)



Posidonia Green (N) (S) (Q10)



Arcilla Red (N) (S) (Q10)



Camden (S) (S) (Q10)



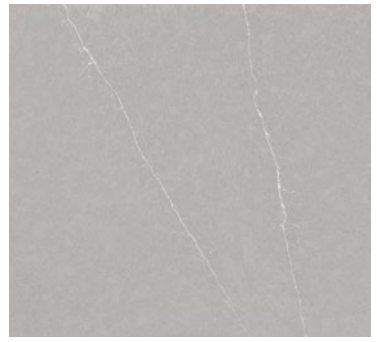
Royal Reef (S) (S) (Q40)



Coral Clay Colour (S) (S) (Q40)



Calypso (S) (S) (Q40)



Et. Serena (S) (S) (Q40)



Seaport (S) (S) (Q10)



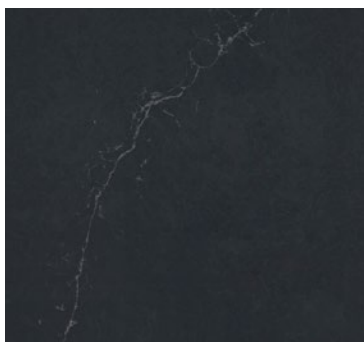
Gris Expo (N) (S) (S) (Q40)



Marengo (N) (S) (Q40)



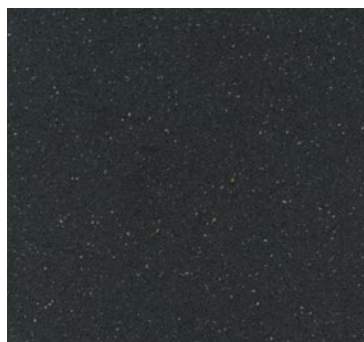
Cala Blue (N) (S) (Q10)



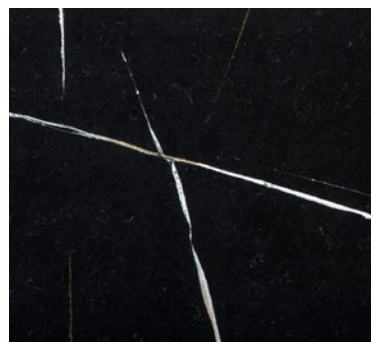
Charcoal Soapstone (N) (S) (S) (Q40)



Arden Blue (S) (S) (Q40)



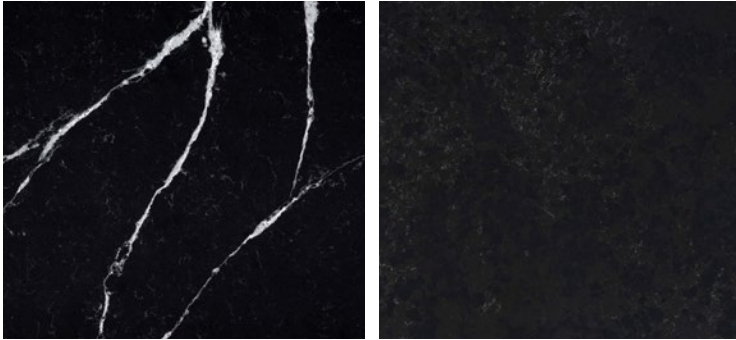
Negro Tebas 18 (N) (S) (S) (Q40)



Et. Noir (S) (S) (Q40) (R)









# Silestone® Collection



Et. Marquina    Q40 

Corktown   Q<sup>+</sup>10

## Key

-  Standard format (up to 306 cm x 140 cm).
-  Jumbo standard (up to 325 cm x 159 cm).
-  Available in Polished finish.
-  Available in Suede finish.
-  Available in Volcano finish.
-  With N-BOOST technology.

HybriQ: Technology applied to the Silestone portfolio that implies a significant reduction in the content of crystalline silica.

Q<sup>+</sup>50

The Q accompanied with the sign “+” indicates it has a minimum of 20% of recycled material in its formula.

Q10

The figure next to the Q corresponds to the maximum percentage of content of crystalline silica (10%, 40% or 50%).

## Silestone® Collection



## Finishes and thicknesses available

Group	Colour	Size	Available finishes <sup>(1)</sup>	Technology	Polished			Suede or Volcano		
					1.2 cm	2.0 cm	3.0 cm	1.2 cm	2.0 cm	3.0 cm
1	Arden Blue	Ⓢ	✱ ● ●●	Q40	•	•	•	•	•	•
	Gris Expo	Ⓝ Ⓢ	✱ ● ●● <sup>(2)</sup>	Q40	•	•	•	•	•	•
	Marengo	Ⓝ	✱ ●	Q40	•	•	•	•	•	•
2	Blanco Maple 14	Ⓝ Ⓢ	✱ ●	Q40	•	•	•	•	•	•
	Camden	Ⓢ	●	Q10				•	•	•
	Coral Clay Colour	Ⓢ	✱ ●	Q40	•	•	•	•	•	•
	Miami White 17	Ⓝ Ⓢ	✱ ●	Q40	•	•	•	•	•	•
	Negro Tebas 18	Ⓝ Ⓢ	✱ ●	Q40	•	•	•	•	•	•
	Royal Reef	Ⓢ	✱ ●	Q40	•	•	•	•	•	•
	White Storm 14	Ⓝ Ⓢ	✱ ●	Q40	•	•	•	•	•	•
	Brass Relish <b>NEW</b>	Ⓢ	●	Q40				•	•	•
	Cinder Craze <b>NEW</b>	Ⓢ	●	Q40				•	•	•
3	Concrete Pulse <b>NEW</b>	Ⓢ	●	Q40				•	•	•
	Lime Delight <b>NEW</b>	Ⓢ	●	Q40				•	•	•
	Desert Silver	Ⓝ Ⓢ	✱ ●	Q40	•	•	•	•	•	•
	Miami Vena	Ⓝ Ⓢ	✱ ●	Q40	•	•	•	•	•	•
	Snowy Ibiza	Ⓝ Ⓢ	✱ ●	Q40	•	•	•	•	•	•
	White Arabesque	Ⓝ Ⓢ	✱ ●	Q40	•	•	•	•	•	•
	Yukon	Ⓝ	✱ ●	Q40	•	•	•	•	•	•
4	Arcilla Red	Ⓝ	●	Q10				•	•	•
	Blanco Zeus	Ⓝ Ⓢ	✱ ● ●● <sup>(2)</sup>	Q40	•	•	•	•	•	•
	Cala Blue	Ⓝ	●	Q10				•	•	•
	Charcoal Soapstone	Ⓝ Ⓢ	✱ ●	Q40	•	•	•	•	•	•
	Cinzel Grey	Ⓝ	●	Q10				•	•	•
	Corktown	Ⓢ	●	Q10				•	•	•
	Et. Serena	Ⓢ	✱ ●	Q40	•	•	•	•	•	•
	Faro White	Ⓝ	●	Q10				•	•	•
	Nolita 23	Ⓢ	●	Q10				•	•	•
	Poblenou	Ⓢ	●	Q10				•	•	•
	Posidonia Green	Ⓝ	●	Q10				•	•	•
	Seaport	Ⓢ	●	Q10				•	•	•
	5	Calypso	Ⓢ	✱ ●	Q40	•	•	•	•	•
Et. Marquina		Ⓢ	✱ ●	Q40	•	•	•	•	•	•
Et. Statuario		Ⓢ	✱ ●	Q40	•	•	•	•	•	•

## Silestone® Collection



## Finishes and thicknesses available

Group	Colour	Size	Available finishes <sup>(1)</sup>	Technology	Polished			Suede or Volcano		
					1.2 cm	2.0 cm	3.0 cm	1.2 cm	2.0 cm	3.0 cm
6	Et. Calacatta Gold	Ⓝ <sup>(3)</sup> Ⓢ	✱ ●	Q40	•	•	•	•	•	•
	Et. Noir	Ⓢ	✱ ●	Q40 Ⓢ	•	•	•	•	•	•
	Ethereal Glow	Ⓢ	✱ ●	Q40	•	•	•	•	•	•
	Ethereal Noctis	Ⓢ	✱ ●	Q40	•	•	•	•	•	•
7	Bohemian Flame <b>NEW</b>	Ⓢ	✱ ●	Q10	•	•	•	•	•	•
	Eclectic Pearl <b>NEW</b>	Ⓢ	✱ ●	Q40	•	•	•	•	•	•
	Parisien Bleu <b>NEW</b>	Ⓢ	✱	Q10	•	•	•			
	Romantic Ash <b>NEW</b>	Ⓢ	✱ ●	Q40 Ⓢ	•	•	•	•	•	•
	Versailles Ivory <b>NEW</b>	Ⓢ	✱	Q40	•	•	•			
	Victorian Silver <b>NEW</b>	Ⓢ	✱	Q40	•	•	•			

→ <sup>(1)</sup> **Available finishes:** Any color in any finish is available upon minimum request of 20 slabs for Polished and Suede finish and 40 slabs for Volcano finish. Not applicable to Versailles Ivory, Victorian Silver and Parisien Bleu.

→ <sup>(2)</sup> Colours with Volcano finish only available in Standard format.

→ <sup>(3)</sup> Check availability with your nearest Center.

## Key

•	Available
Ⓝ	Standard format (up to 306 cm x 140 cm).
Ⓢ	Jumbo standard (up to 325 cm x 159 cm).
✱	Available in Polished finish.
●	Available in Suede finish.
⦿	Available in Volcano finish.
Ⓢ	With N-BOOST technology.

HybriQ: Technology applied to the Silestone portfolio that implies a significant reduction in the content of crystalline silica.

Q50

The Q accompanied with the sign “+” indicates it has a minimum of 20% of recycled material in its formula.

Q10

The figure next to the Q corresponds to the maximum percentage of content of crystalline silica (10%, 40% or 50%).